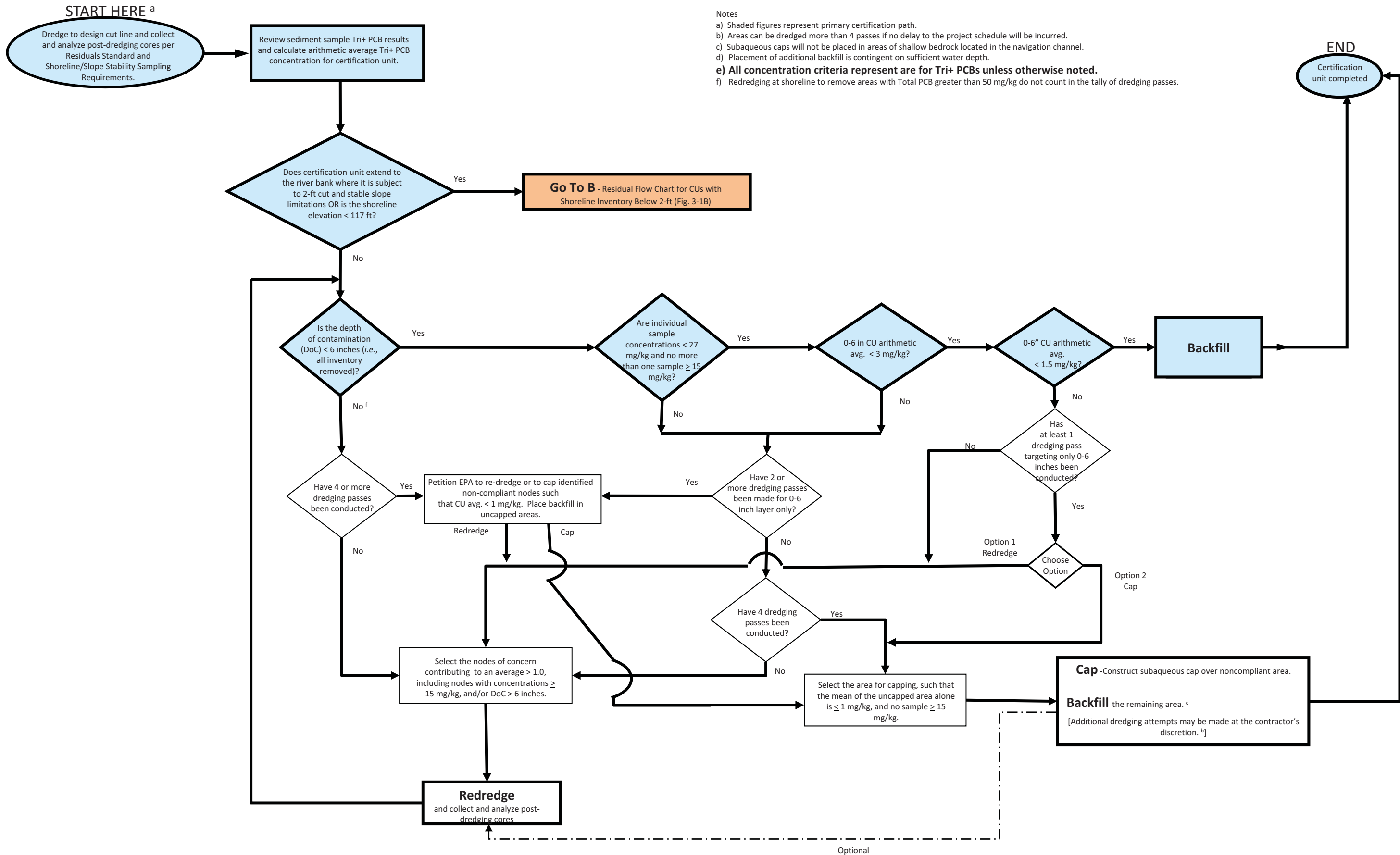


# CHAPTER II FIGURES

# **CHAPTER II**

## **SECTION 1 FIGURES**



- Notes
- a) Shaded figures represent primary certification path.
  - b) Areas can be dredged more than 4 passes if no delay to the project schedule will be incurred.
  - c) Subaqueous caps will not be placed in areas of shallow bedrock located in the navigation channel.
  - d) Placement of additional backfill is contingent on sufficient water depth.
  - e) All concentration criteria represent are for Tri+ PCBs unless otherwise noted.
  - f) Redredging at shoreline to remove areas with Total PCB greater than 50 mg/kg do not count in the tally of dredging passes.

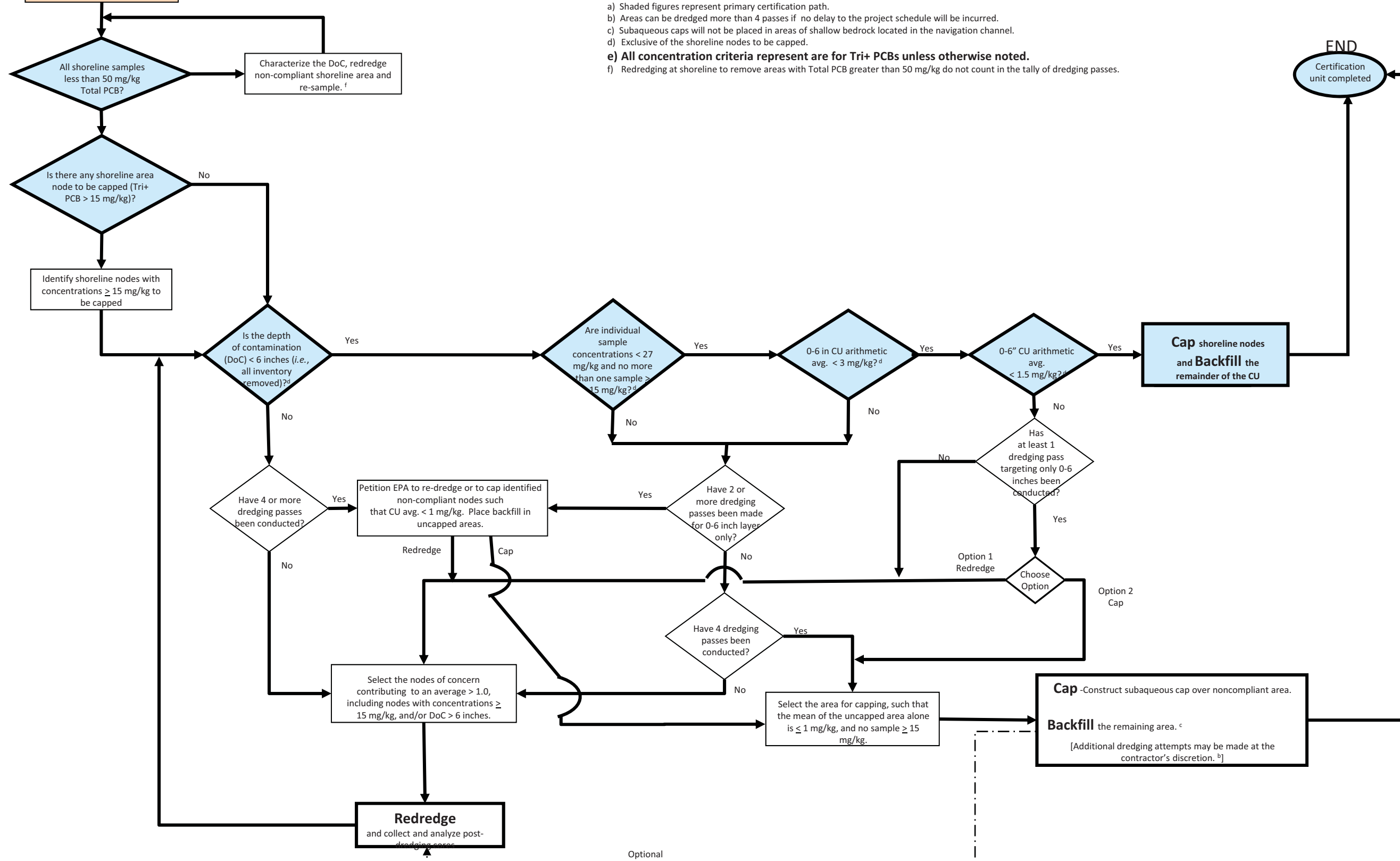


Proposed Residual Flow Chart for All Certification Units

Figure II-1.1.4-1

**B** – From Residual Evaluation  
Flowchart (Figure 3-1a)

- Notes
- a) Shaded figures represent primary certification path.
  - b) Areas can be dredged more than 4 passes if no delay to the project schedule will be incurred.
  - c) Subaqueous caps will not be placed in areas of shallow bedrock located in the navigation channel.
  - d) Exclusive of the shoreline nodes to be capped.
  - e) All concentration criteria represent are for Tri+ PCBs unless otherwise noted.**
  - f) Redredging at shoreline to remove areas with Total PCB greater than 50 mg/kg do not count in the tally of dredging passes.



Proposed Residual Flow Chart for CU2 with Shoreline Inventory below 2 ft

Figure II-1.1.4-2

March 2010