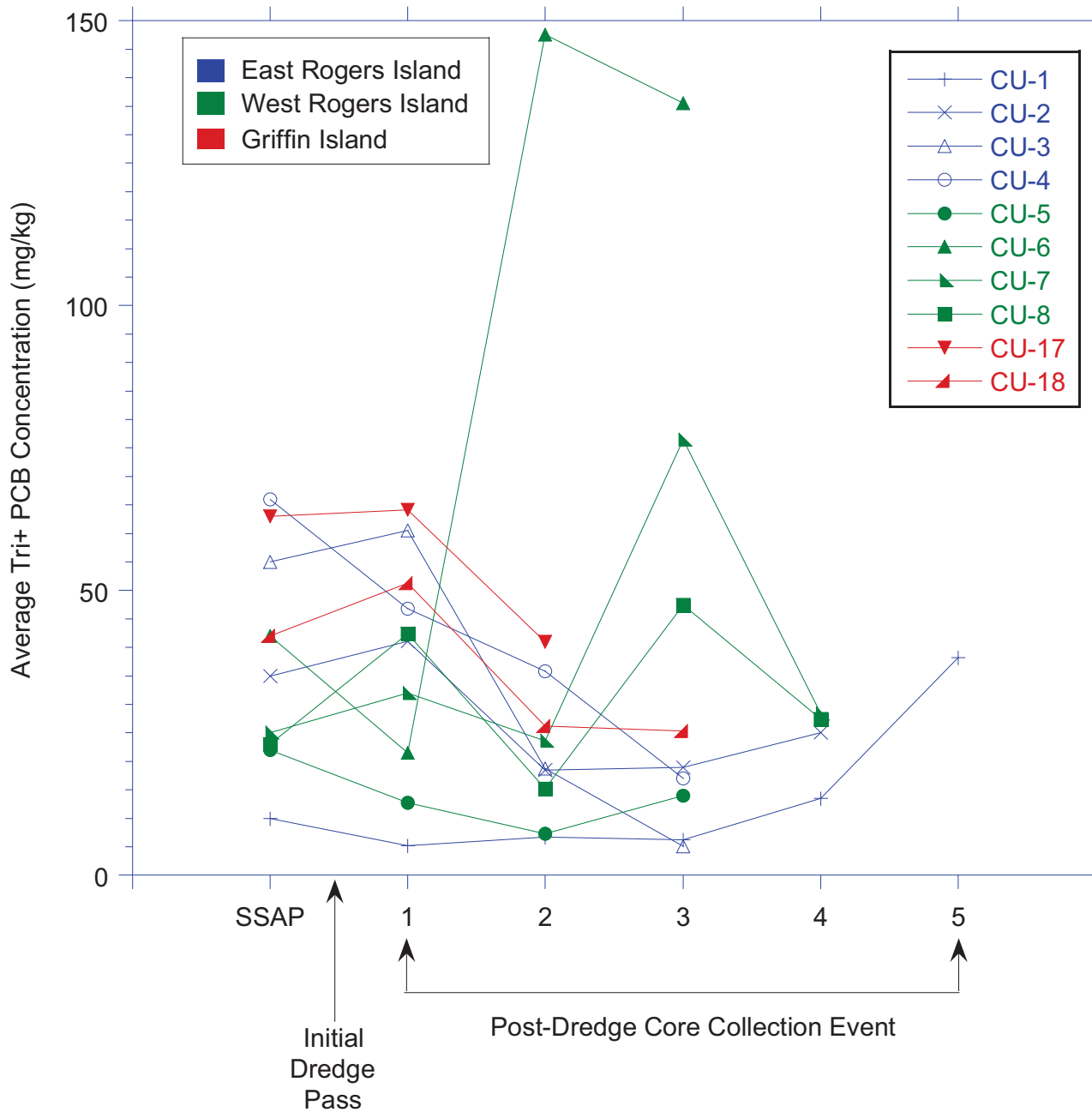


CHAPTER IV FIGURES



Notes:

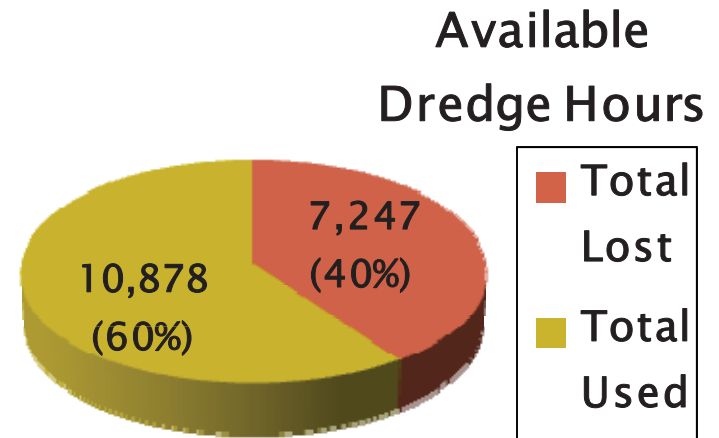
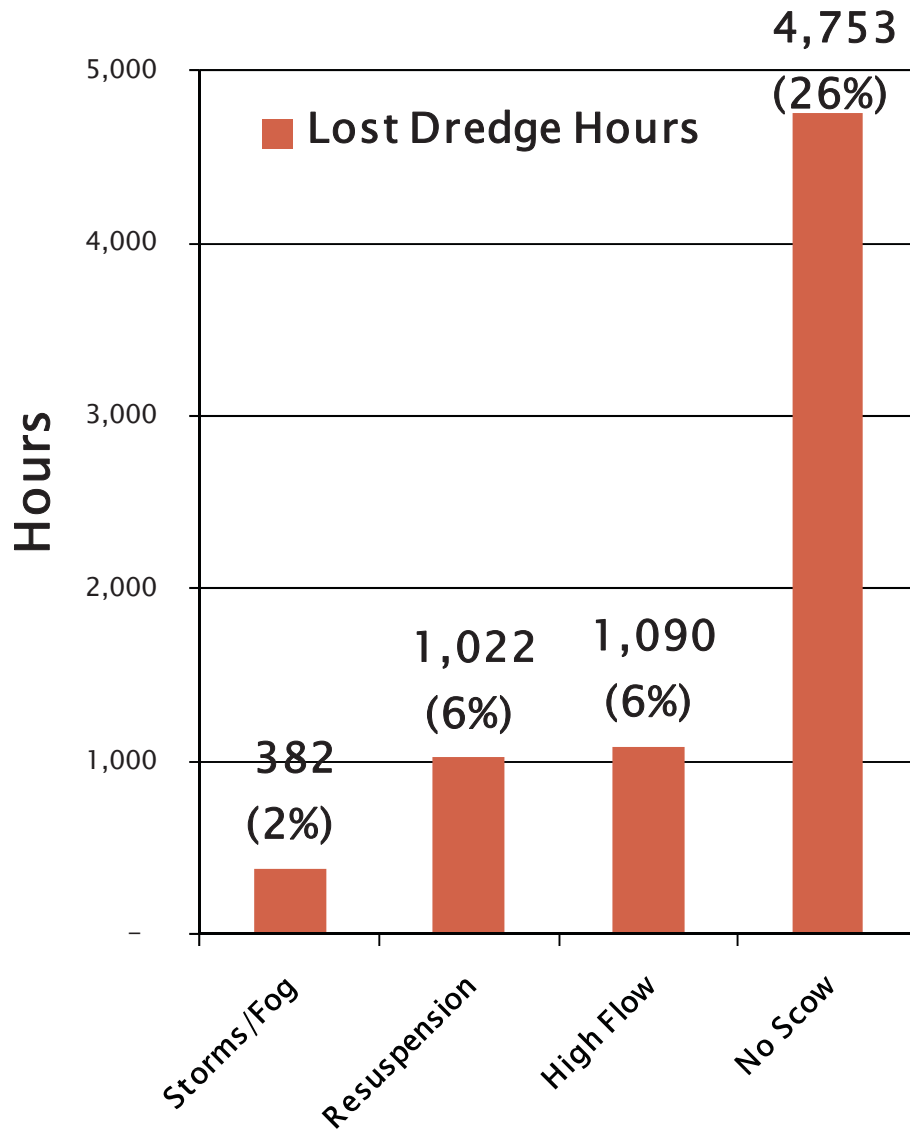
1. Average concentration for dredge pass 1 was taken from 2009-07-15 Resuspension Engineering Evaluation Report from GE to EPA
2. The subsequent dredge pass average conc. was based on residual core data after the dredge pass (for example, dredge pass 2 ave conc. is based on the residual cores data collected after dredge pass 1.)
3. For every CU, the concentration for the last post-dredge core collection event represents the average Tri+ PCB concentration of the nodes that are capped.
4. For CU-17, all the nodes collected in the 3rd post-dredge core collection event are compliance.

Average Tri+ PCB Concentration in SSAP Cores and in Samples Collected in Areas to be Re-dredged

Figure IV-1

March 2010





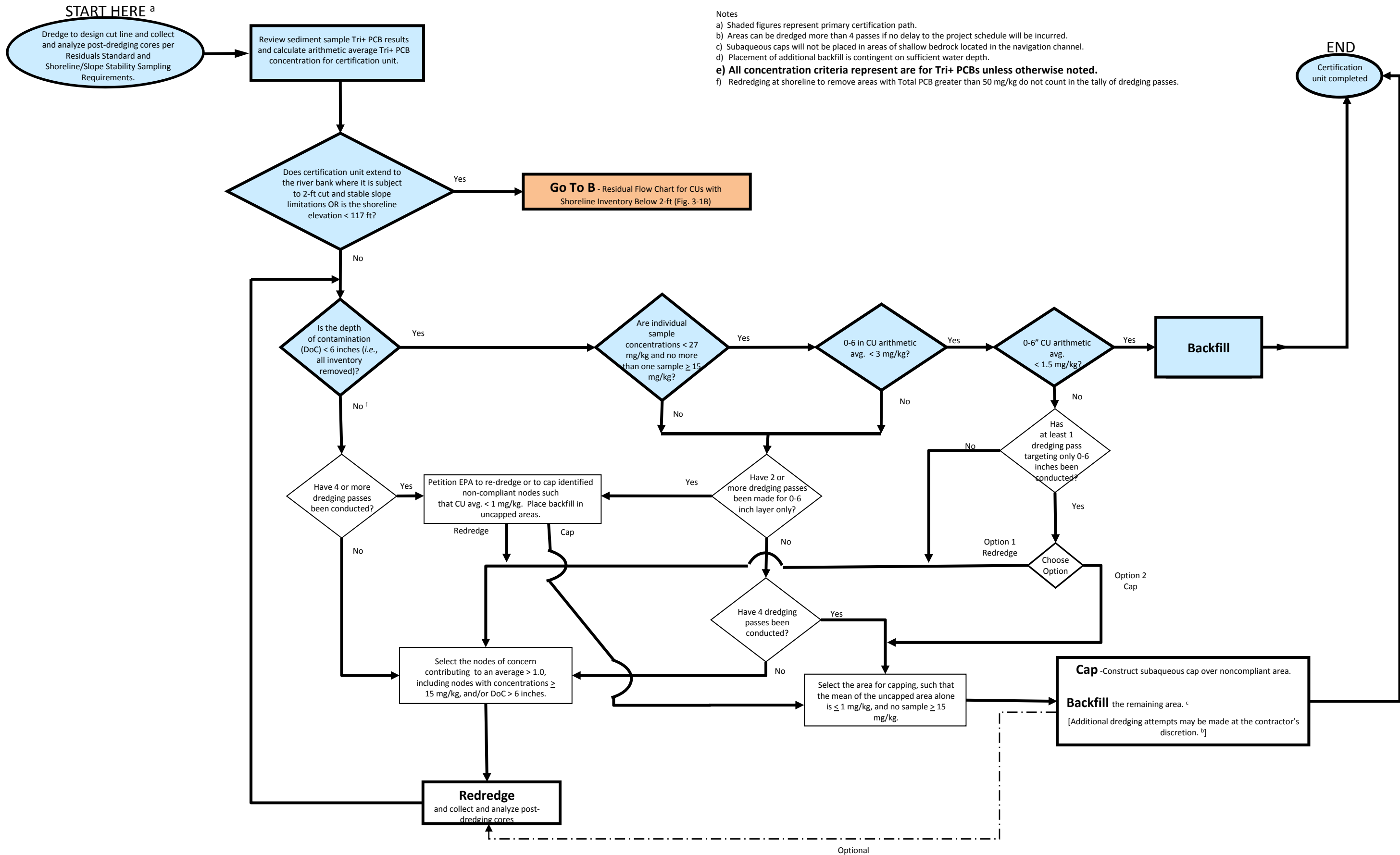
**Total Available Hours
18,125**



Lost Dredging Time

Figure IV-2

March 2010



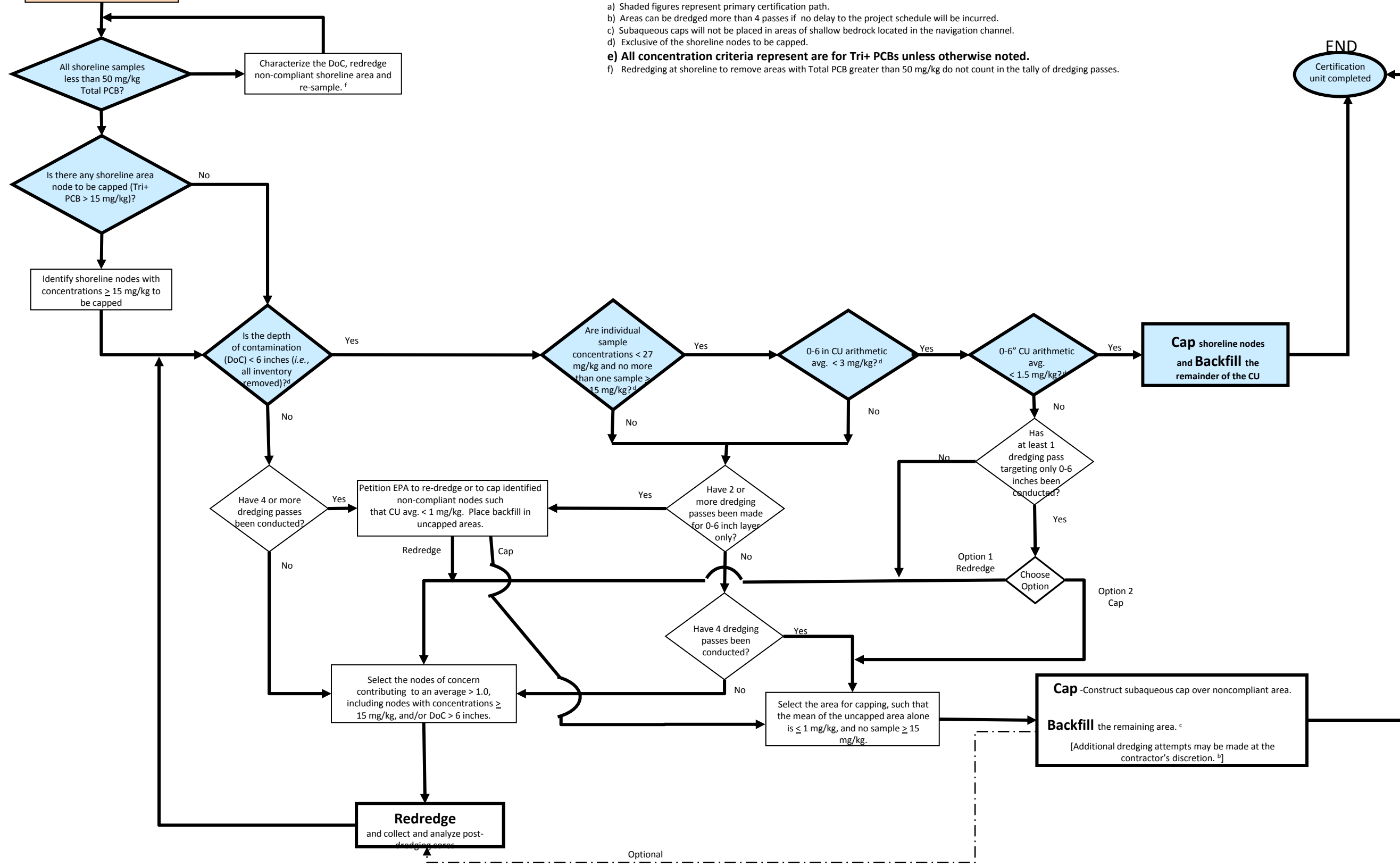
Proposed Residual Flow Chart for All Certification Units

Figure IV-3a

March 2010

B – From Residual Evaluation Flowchart (Figure 3-1a)

- Notes
- a) Shaded figures represent primary certification path.
 - b) Areas can be dredged more than 4 passes if no delay to the project schedule will be incurred.
 - c) Subaqueous caps will not be placed in areas of shallow bedrock located in the navigation channel.
 - d) Exclusive of the shoreline nodes to be capped.
 - e) All concentration criteria represent are for Tri+ PCBs unless otherwise noted.**
 - f) Redredging at shoreline to remove areas with Total PCB greater than 50 mg/kg do not count in the tally of dredging passes.



Proposed Residual Flow Chart for CU2 with Shoreline Inventory below 2 ft

Figure IV-3b

March 2010